

**Excavations at Carmarthen Greyfriars 1983-1997**

## **Analysis of Skeletal Remains**



### **High Resolution Photographs**

**Dr. J. L. Wilkinson,  
formerly of the Anatomy Dept., University College, Cardiff**

**TEXT EDITED BY TERRY JAMES *for* CAMBRIA ARCHAEOLOGY 2001**

**The  
Photographs**



**Plate 1 Context 576:**  
Lower end of right humerus from below



**Plate 2 Context 576:**  
Right humerus, radius and ulna (elbow joint) from front



**Plate 3. Context 595:** Left 5th metacarpal (on right of photo) showing results of old fracture. Compare with normal right 5th metacarpal (left of photo) – this is more slender.



**Plate 4. Context 615:** The 5th left metatarsal (left of photo) has been fractured (also Xrayed). Compare with normal 5th right metatarsal (right of photo)



**Context 754:**

**Plate 5** [Left] Left femur showing exaggerated tendon insulation with the linea aspera (due to DISH)

**Plate 6** [Above] Left hip bone, note the roughening and lipping of the muscular attachment to the iliac crest (DISH).



**Plate 7 Context 957:** Pseudarthrosis of left tibia and fibia viewed from behind.



**Plate 8. Context 957:** Pseudarthrosis of left tibia and fibia – these have been separated to demonstrate the irregular toothed surfaces of the false new ‘joint’.



**Plate 9 Context 971:** 'Bamboo Spine'. Fusion of thoracic vertebral bodies.



**Plate 10 Context 971:** Fusion of cervical vertebral. Fusion of lumbar vertebral.

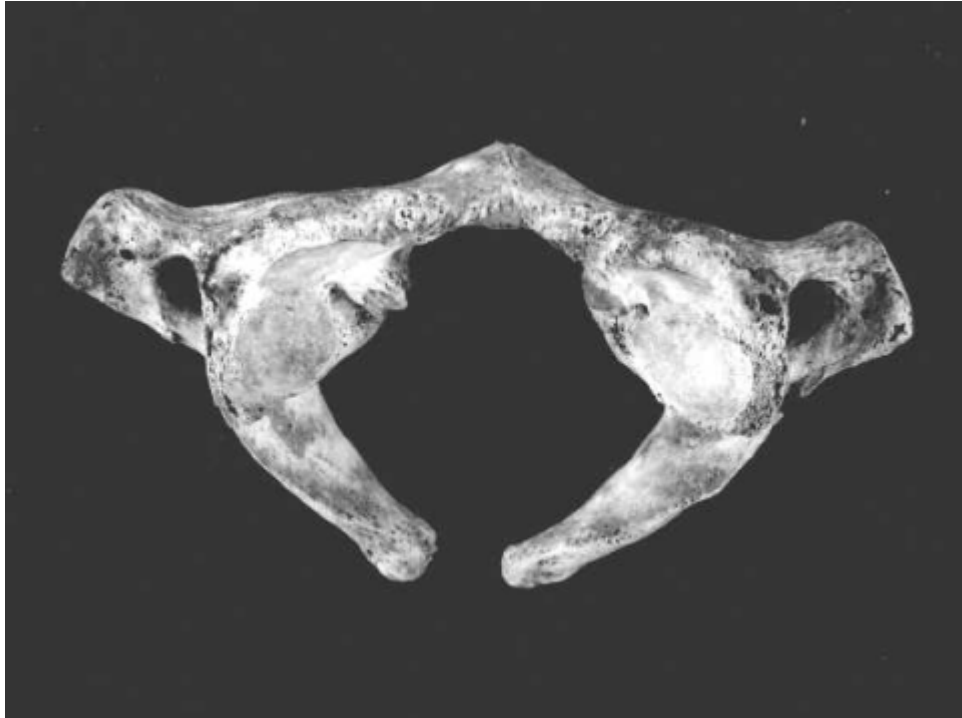




**Plate 11 Context 972:** [left] Early fusion of cervical vertebræ - ('spondylitis').

**Plate 12 Context 980:** [right] Isolated tibial shaft showing indentation and overgrowth of its margins due to external pressure from a soft tissue growth.





**Plate 13 Context 987:** [above] Atlas vertebra, failure of fusion of the posterior arch.

**Plate 14 Context 992:** [right] 5th lumbar vertebra showing a congenital anomaly, spondylolisthesis.



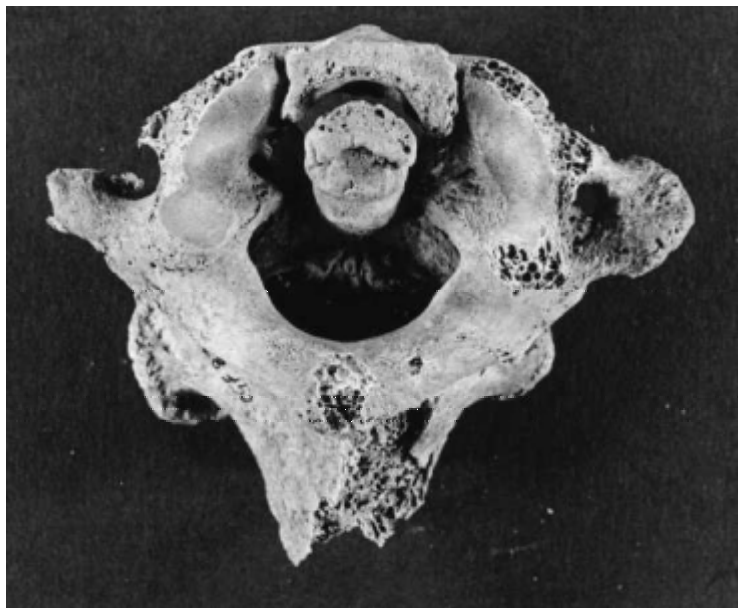




**Plate 15 Context 1007:**  
[left] Metatarso  
phalangeal joint of great  
toe showing arthritis.

**Plate 16 Context 1022:**  
[right] Mandible showing  
torus formation lingually.



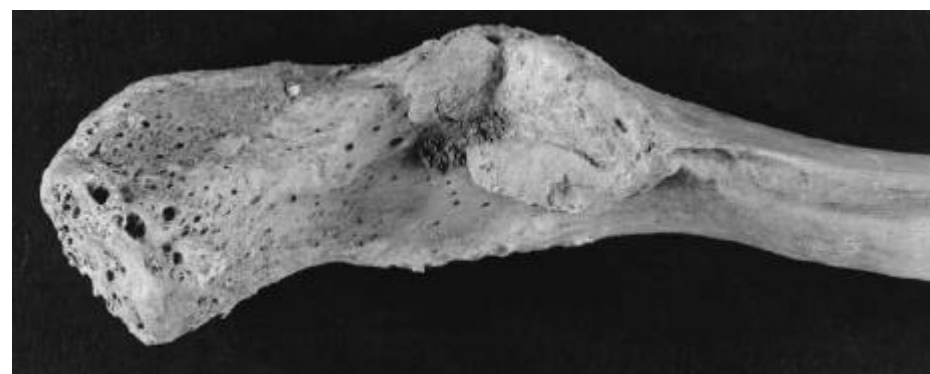


**Plate 17 Context 1394:** [left] Atlas and axis vertebrae. Gross arthritic change between odontoid process of axis and anterior arch of atlas.

**Plate 18 Context 1701** [right].

**Plate 19 Context 1822:** [below] Malunited fracture of ulna.





**Plate 20 Context 1829** [left] Scapula (I) Acromion – unusual joint for clavicle – DISH; (ii) suprascapular foramen – congenital anomaly.

**Plate 21 Context 1829** [above] Under surface of clavicle – a facet for articulation with acromion of scapula a ligament is attached here but DISH has caused unusual changes and development of a different type of joint.

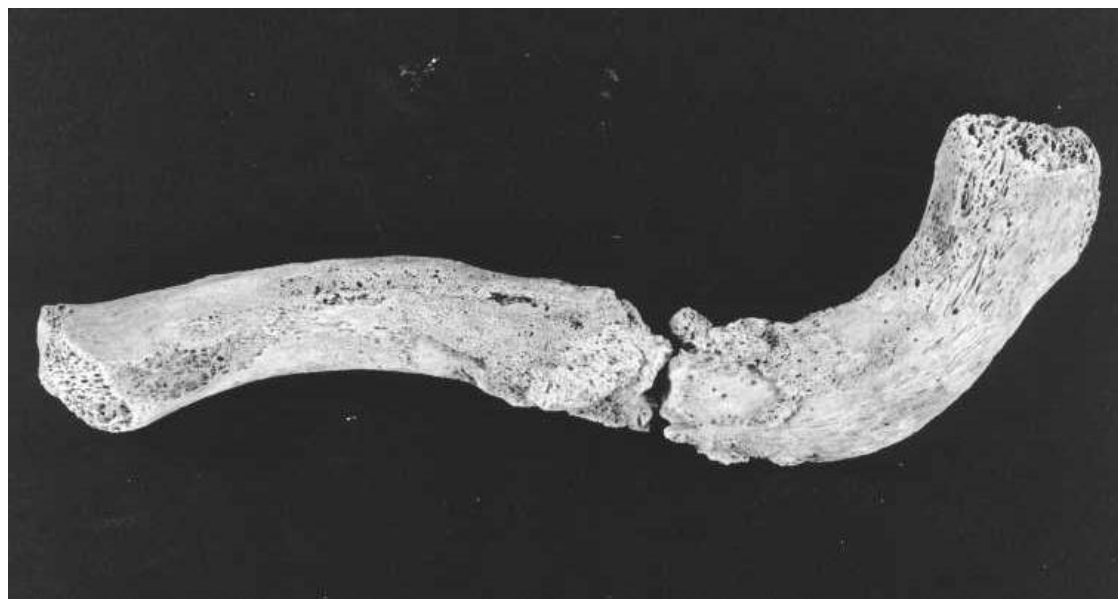
**Plate 22 Context 1833** [below] Arthritic cervical vertebrae.





**Plate 23 Context 1862** [left]: Unusual spinous process of L5 vertebra (bifid spinous process).

**Plate 24 Context 1881** [below]: Fractured and healing left clavicle.



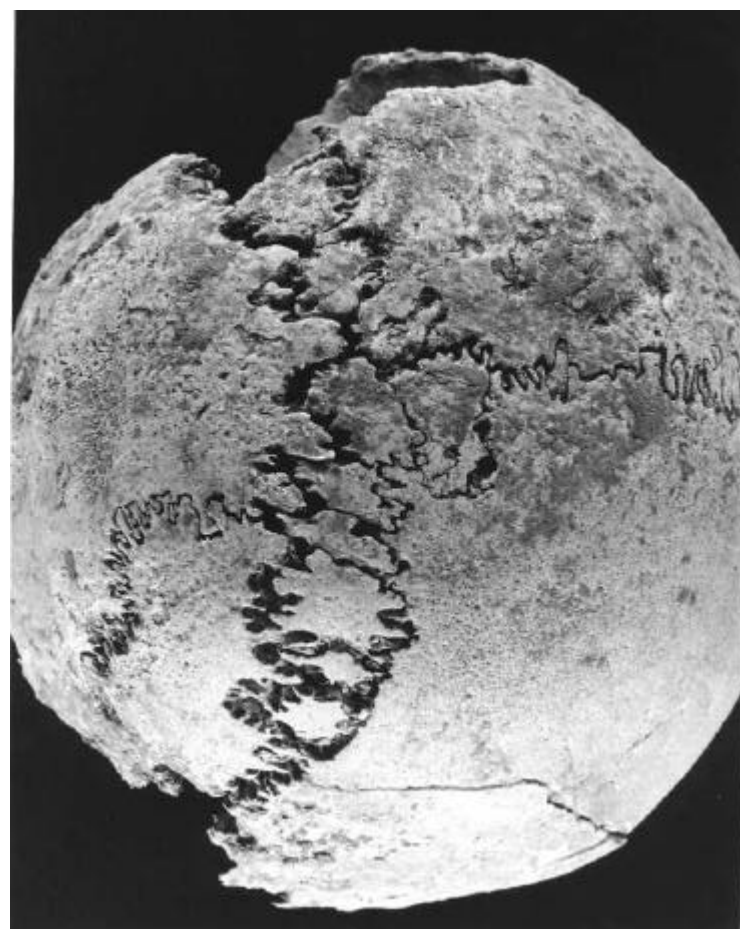




**Plates 25 & 26**

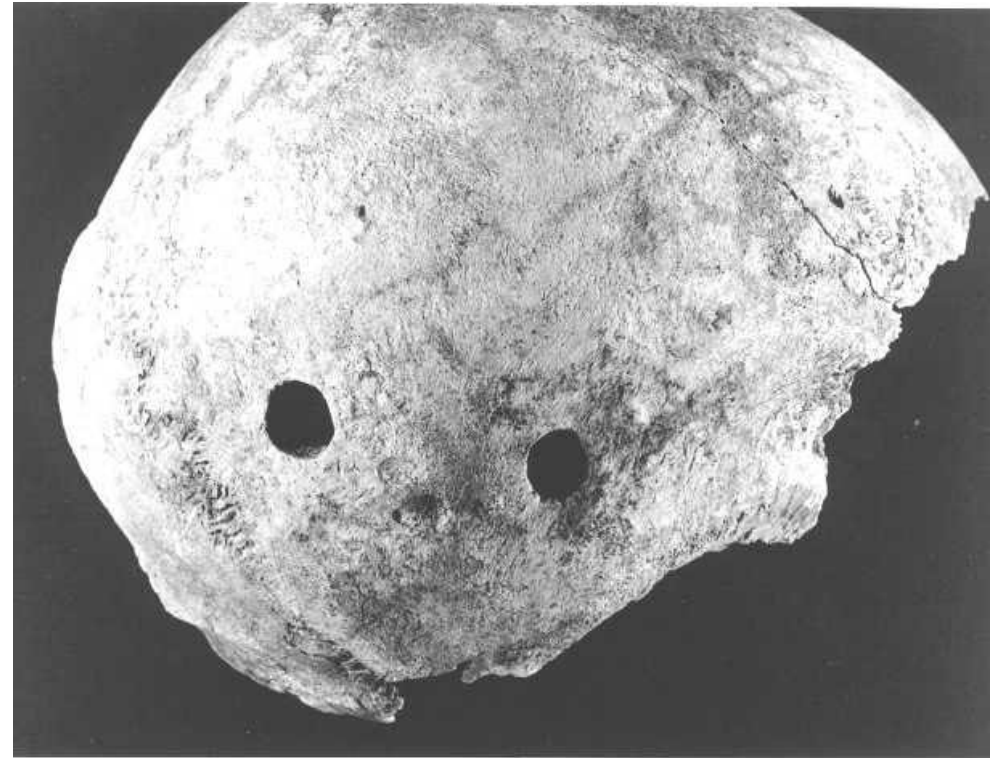
**Context 1889:**

Multiple Wormian bones, persistent metopic suture.





**Plates 27 & 28 Context 1893:** Trephine holes in right parietal bone of skull.







**Plate 29 Context 1902** [left]: DISH-type lipping of the outer border of iliac crest anteriorly, also of the reflected head of rectus femoris.

**Plate 30 Context 1916** [below]: Fusion of 2nd and 3rd thoracic vertebræ (congenital defect).





**Plate 31 Context 2096** [far left]: Ridged public face.

**Plate 32 Context 2179** [left] Fused supraspinous ligaments and pedicles but not interspinous ligaments.

**Plate 33 Context 2185** [below left] : A bony over vertebral artery groove over right side of photo.

**Plate 34** [below right] Congenitally fused premolar teeth.

